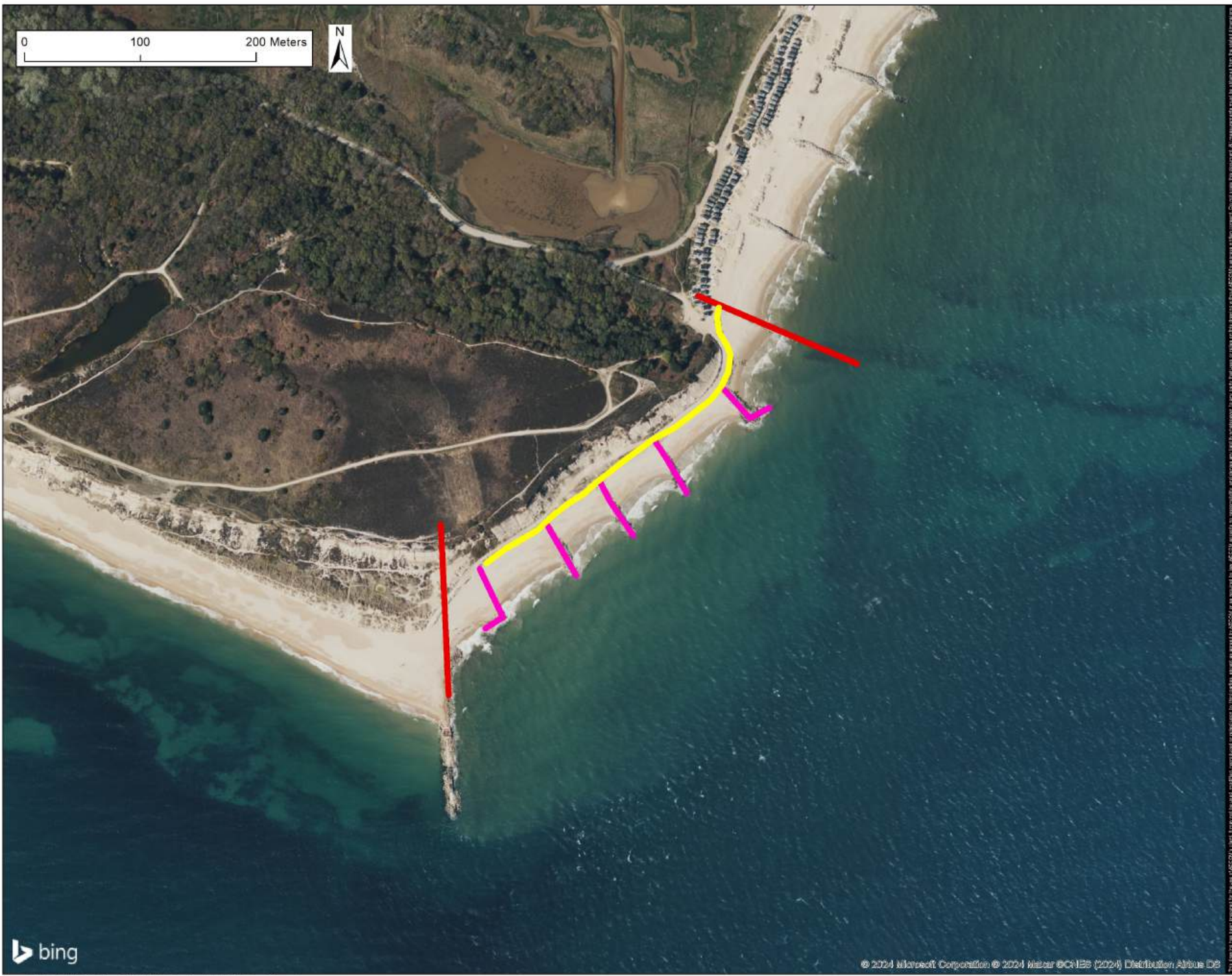


The maps shown in this Appendix present the indicative defence alignments identified for the leading options that were developed during the option appraisal stage of the Strategy.

In some ODUs there are multiple leading options that have been identified in the Strategy. However, the maps may only show defence alignments for one of the leading options. The legend of each map indicates which of the leading options are shown.

It should be noted that the alignments are indicative only and were developed primarily for the purpose of costing the strategy options.

More work will be required to update and refine the defence alignments following the Strategy when developing scheme level appraisals and design. The alignments are therefore subject to change and should not be relied upon for planning, investment or defence management decisions. Implementation of the Strategy leading options is subject to acquiring the required funding.



0 100 200 Meters



AECOM

AECOM I&E UK Limited
 Midpoint
 Alençon Link
 Basingstoke RG21 7PP
 +44 (0)1256 310200 tel
 www.aecom.com

Project Title:
 CHRISTCHURCH BAY &
 HARBOUR FCERM
 STRATEGY

Legend

- Maintain / Refurbish Rock Revetment (Managed Realignment Local Option)
- Maintain / Refurbish Groynes (Managed Realignment Local Option)
- ODU Boundaries

Copyright:
 Copyright: © 2024 Microsoft Corporation
 © Maxar © CNES (2024)
 Distribution Airbus DS

Issue/Revision:

WT	Date	Description

AECOM Internal Project No:
 60558006

Drawing Title:
 ODU 1

ODUS
 Scale at A3: 1:3,000
Drawing No: V1
Rev:
 V1
Drawn: BT **Chk'd:** JS **Date:** 23/04/24





Legend

- Maintain / Refurbish existing Rock Revetment (Maintain with Adaptation, Local Option)
- Maintain / Refurbish existing Groynes (Maintain with Adaptation, Local Option)
- Beach Nourishment Area (Maintain with Adaptation, Local Option)
- Maintain / Refurbish existing Seawall (Maintain with Adaptation, Local Option)
- ODU Boundaries

Copyright:
 Copyright: © 2024 Microsoft Corporation
 © Maxar © CNES (2024)
 Distribution Airbus DS

Issue/Revision:

Rev	Date	Description

AECOM Internal Project No:
 60558006

Drawing Title:

ODU 2

ODUS

Scale at A3: 1:6,272.27

Drawn:	Chk'd:	Date:	Rev:
BT	JS	23/04/24	V1

This drawing is the property of AECOM I&E UK Limited. It is not to be used for any other project without the written consent of AECOM I&E UK Limited. All rights reserved. AECOM I&E UK Limited is not responsible for any errors or omissions in this drawing. It is not to be used for any other project without the written consent of AECOM I&E UK Limited. All rights reserved.



Legend

- Slope armour - Road
 (Adaptation and Resilience C, Local Option)
- Slope armour - Historic Landfill
 (Adaptation and Resilience C, Local Option)
- ODU Boundaries

Copyright:
 Copyright: © 2024 Microsoft Corporation
 © Maxar © CNES (2024)
 Distribution Airbus DS

Issue/Revision:

Wt	Date	Description

AECOM Internal Project No:
 60558006

Drawing Title:
 ODU 3

ODUS
 Scale at A3: 1:6,922.95
Drawing No:
 V1
Drawn: Chk'd: Date:
 BT JS 23/04/24

The information herein is provided for the use of the user. AECOM I&E UK Limited, its subsidiaries, affiliates, and licensors are not responsible for any errors or omissions in this document. Correct use of this document is the responsibility of the user. AECOM I&E UK Limited, its subsidiaries, affiliates, and licensors are not responsible for any errors or omissions in this document. Correct use of this document is the responsibility of the user.

Legend

- Setback
defence
(Sustain B&C,
National &
Local Options)
- Maintain /
Refurbish
existing Quay
wall (Sustain B,
Local Option))
- ODU
Boundaries

Copyright:
 Copyright: © 2024 Microsoft
 Corporation
 © Maxar © CNES (2024)
 Distribution Airbus DS

Issue/Revision:

Wt	Date	Description

AECOM Internal Project No:
 60558006

Drawing Title:
 ODU 4

ODUS
 Scale at A3: 1:3,000
Drawing No: Rev:
 BT JS V1
Drawn: **Chk'd:** **Date:**
 BT JS 23/04/24



This drawing has been prepared by the use of AECOM's computerized systems and is the property of AECOM. It is not to be used for any other purpose without the written consent of AECOM. AECOM shall not be held responsible for any errors or omissions in this drawing. Do not scale this drawing. All measurements should be taken from the original drawing.

Legend

- Setback
defence west
(Improve C,F)
- Upgraded
setback
defence east
(Improve
A,C,D,F)
- Frontline quay
wall west
(Improve
A,B,D,E)
- Fronline quay
wall east
(Improve B,E)
- ODU
Boundaries

Copyright:
 Copyright: © 2024 Microsoft
 Corporation
 © Maxar © CNES (2024)
 Distribution Airbus DS

Issue/Revision:

Wt	Date	Description

AECOM Internal Project No:

60558006

Drawing Title:

ODU 5

ODUS

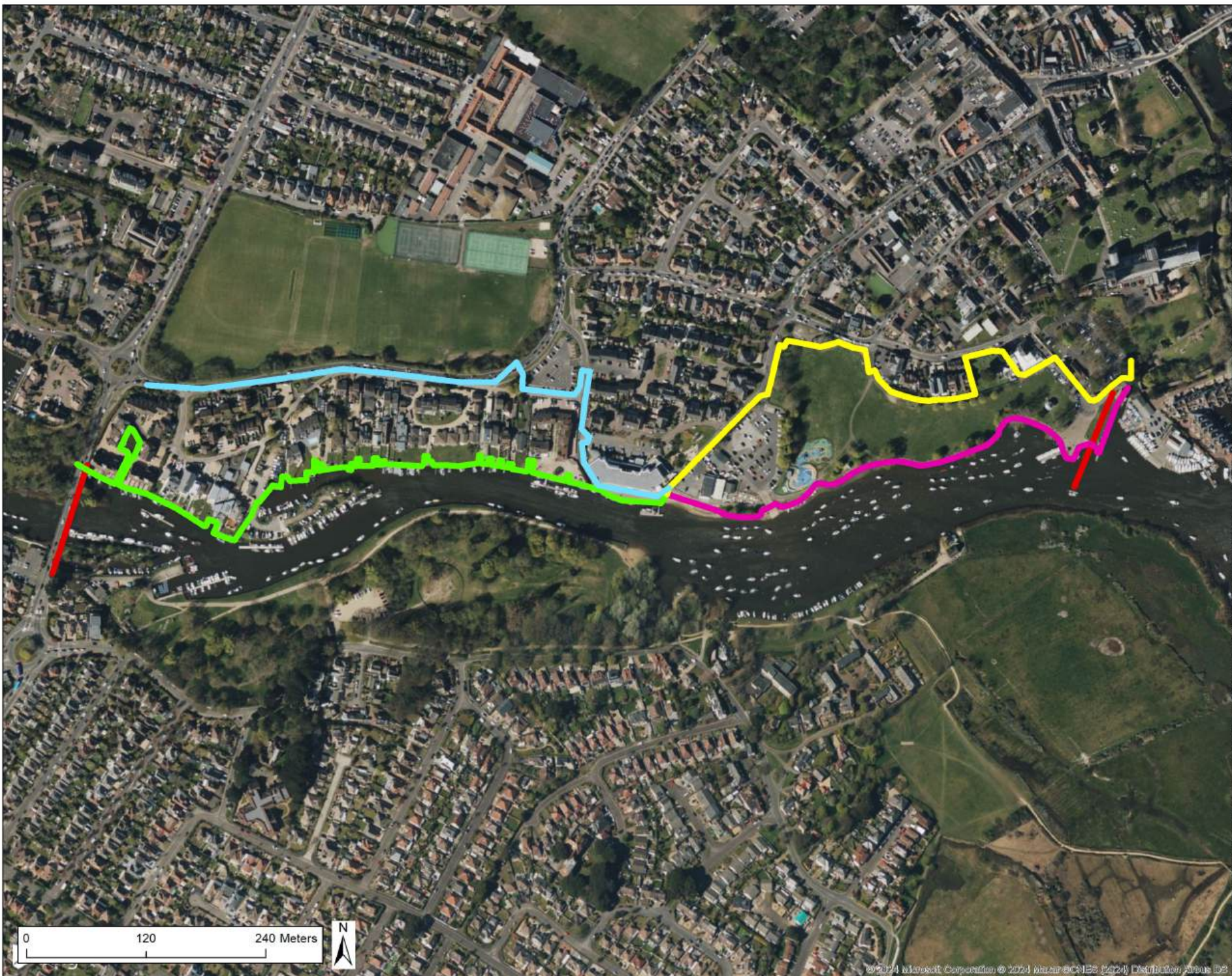
Scale at A3: 1:3,500

Drawing No:

V1

Drawn: Chk'd: Date:

BT JS 23/04/24



This drawing is the property of AECOM I&E UK Limited. It is not to be used, copied, reproduced, or disseminated in any form or by any means without the prior written consent of AECOM I&E UK Limited. AECOM I&E UK Limited is not responsible for any errors or omissions in this drawing. AECOM I&E UK Limited is not responsible for any damage or loss of any kind resulting from the use of this drawing.

Legend

-  Approximate
PLP area North
(Adaptation &
Resilience,
National Option)
-  Approximate
PLP area South
(Adaptation &
Resilience,
National Option)
-  ODU
Boundaries
-  Existing Quay
wall (masonry)
-  Maintain
existing Quay
wall (Adaptation
& Resilience,
National Option)

Copyright:
 Copyright: © 2024 Microsoft
 Corporation
 © Maxar © CNES (2024)
 Distribution Airbus DS

Issue/Revision:

Rev	Date	Description

AECOM Internal Project No:
 60558006

Drawing Title:

ODU 6

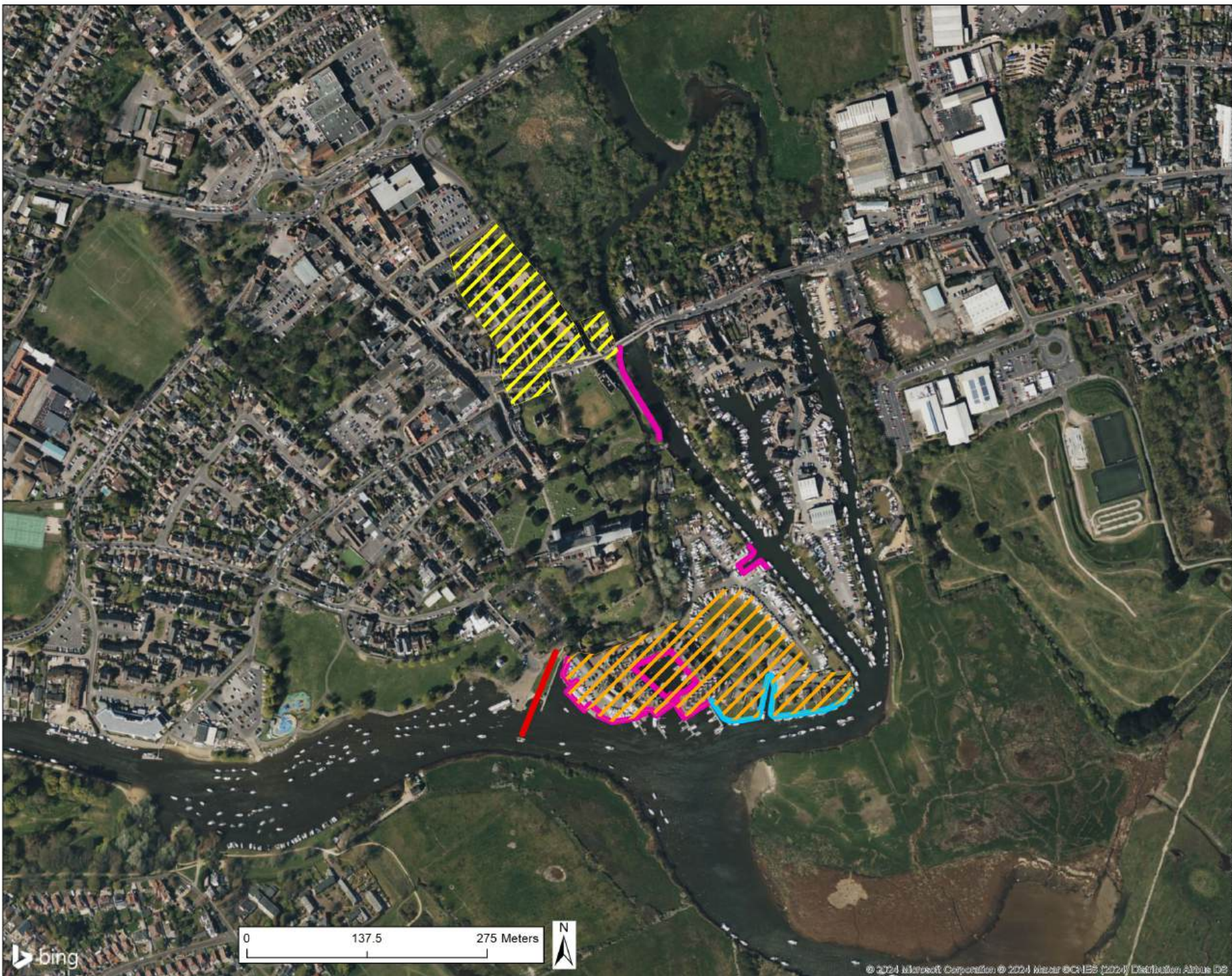
ODUS

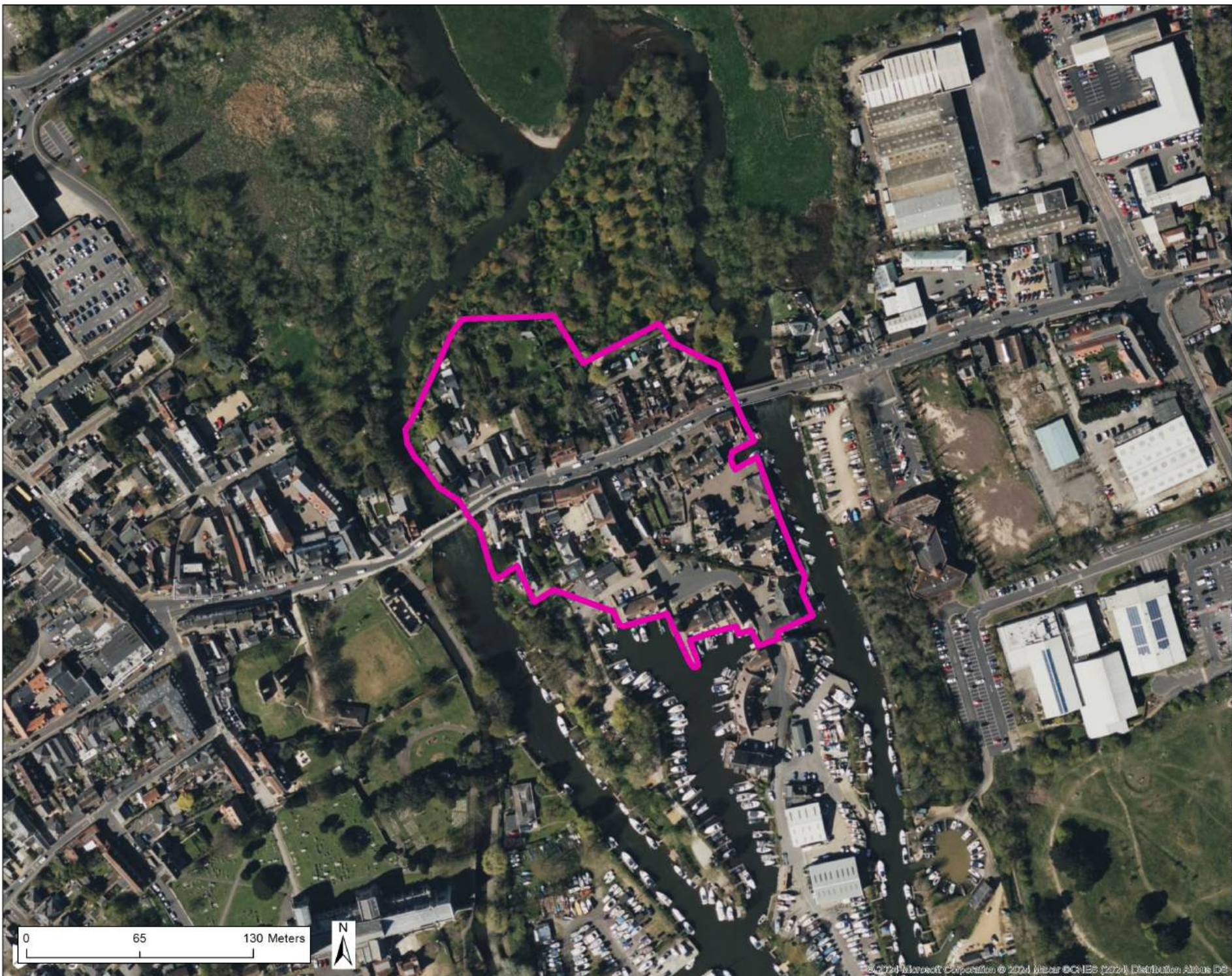
Scale at A3: 1:4,000

Drawing No: V1

Drawn: Chk'd: **Date:**

BT JS 24/04/24





Legend

- Upgrade various defences (Improve A, National Option)
- ODU Boundaries

Copyright:
 Copyright: © 2024 Microsoft Corporation
 © Maxar © CNES (2024)
 Distribution Airbus DS

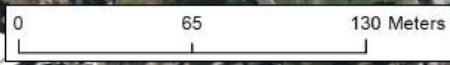
Issue/Revision:

Wk	Date	Description

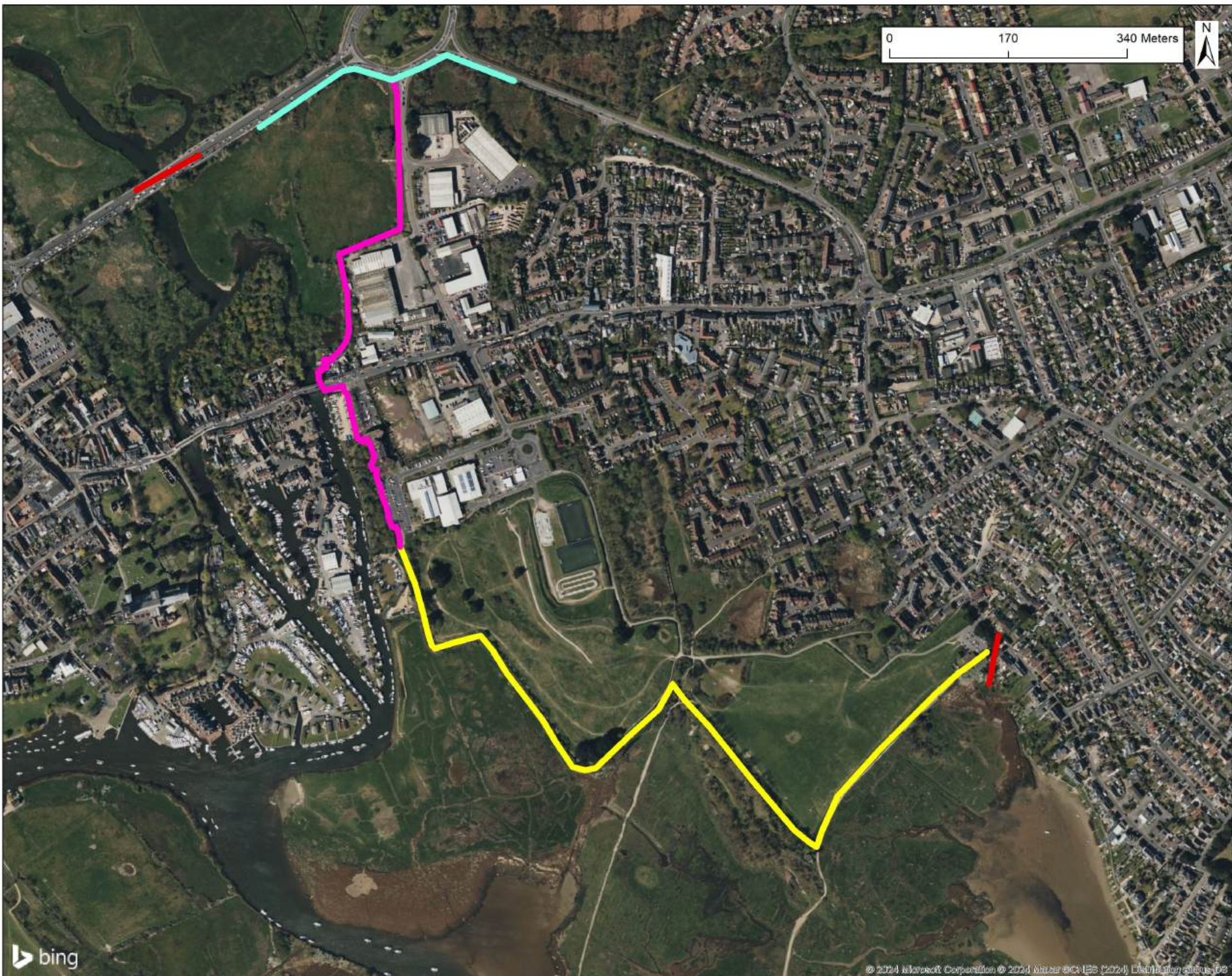
AECOM Internal Project No:
 60558006

Drawing Title:
 ODU 7

ODUS
 Scale at A3: 1:2,000
Drawing No: Rev:
 BT JS V1
Drawn: Chk'd: Date:
 BT JS 23/04/24



This drawing is the property of AECOM I&E UK Limited. It is to be used only for the project for which it was prepared. It is not to be used for any other purpose without the written consent of AECOM I&E UK Limited. AECOM I&E UK Limited is not responsible for any errors or omissions in this drawing. AECOM I&E UK Limited is not responsible for any damage or loss of any kind resulting from the use of this drawing.



Legend

- Potential defences to prevent outflanking in epoch 3 (Sustain A, National Option)
- Setback defence north (Sustain A, National Option)
- Defence around Stanpit historic landfill (Sustain A, National Option)
- ODU Boundaries

Copyright:
 Copyright: © 2024 Microsoft Corporation
 © Maxar © CNES (2024)
 Distribution Airbus DS

Issue/Revision:

Rev	Date	Description

AECOM Internal Project No:
 60558006

Drawing Title:
ODU 9

ODUS
 Scale at A3: 1:5,000
Drawing No: V1
Rev:
 V1
Drawn: BT **Chk'd:** JS **Date:** 23/04/24

This drawing has been prepared by the use of AECOM's best engineering and construction practices and is intended to be used as a guide only. It is not intended to be used as a legal document. AECOM and its employees, officers, directors, agents, consultants, subcontractors, and licensors shall not be held responsible for any errors or omissions in this drawing. AECOM shall not be held responsible for any errors or omissions in this drawing. AECOM shall not be held responsible for any errors or omissions in this drawing. AECOM shall not be held responsible for any errors or omissions in this drawing.

Legend

- Maintenance of existing Quay Wall (Adaptation & Resilience, Local Option)
- Maintenance of existing Quay wall (Adaptation & Resilience, Local Option)
- ODU Boundaries

Copyright:
 Copyright: © 2024 Microsoft Corporation
 © Maxar © CNES (2024)
 Distribution Airbus DS

Issue/Revision:

Issue/Revision	Date	Description

AECOM Internal Project No:
 60558006

Drawing Title:

ODU 11

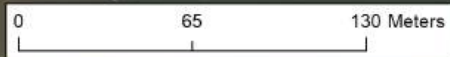
ODUS
 Scale at A3: 1:2,000

Drawing No:

Rev:
 V1

Drawn: Chk'd: Date:

BT JS 23/04/24



This drawing is the property of AECOM I&E UK Limited. It is not to be used for any other project without the written consent of AECOM I&E UK Limited. AECOM I&E UK Limited is not responsible for any errors or omissions in this drawing. AECOM I&E UK Limited is not responsible for any damage or loss of any kind resulting from the use of this drawing. AECOM I&E UK Limited is not responsible for any damage or loss of any kind resulting from the use of this drawing.

Legend

- Maintain
Seawall / Rock
Revetment and
raise sections in
the future (i.e.
Avon Beach)
(Improve A,
Improve C;
National and
Local Options)
- Area for Beach
Nourishment
and Rock
Groynes
(Improve A,
Improve C;
National &
Local Options)
- ODU
Boundaries

Copyright:
 Copyright: © 2024 Microsoft
 Corporation
 © Maxar © CNES (2024)
 Distribution Airbus DS

Issue/Revision:

WT	Date	Description

AECOM Internal Project No:
 60558006

Drawing Title:

ODU 12

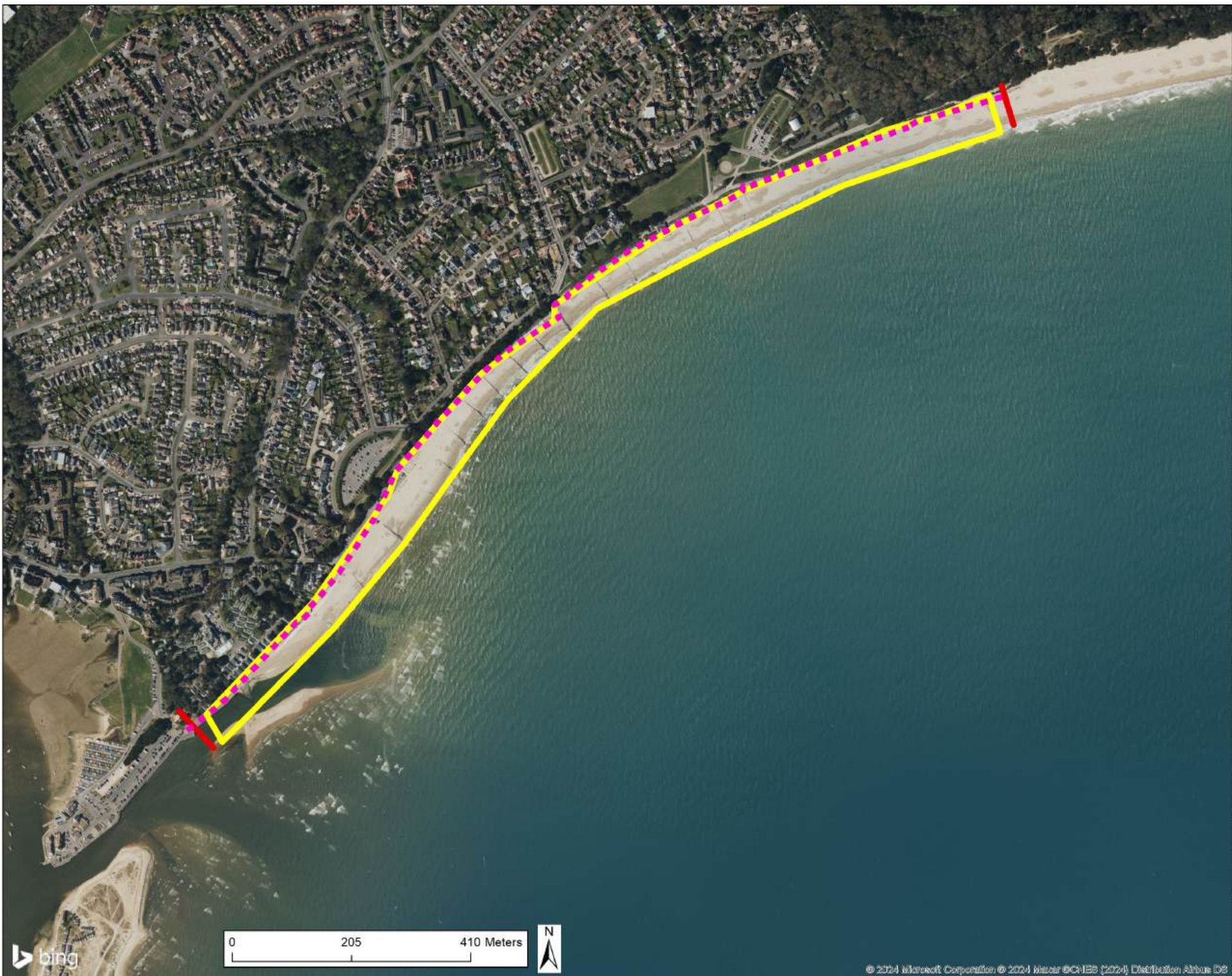
ODUS
 Scale at A3: 1:6,000

Drawing No:

Rev:
 V1

Drawn: Chk'd: Date:

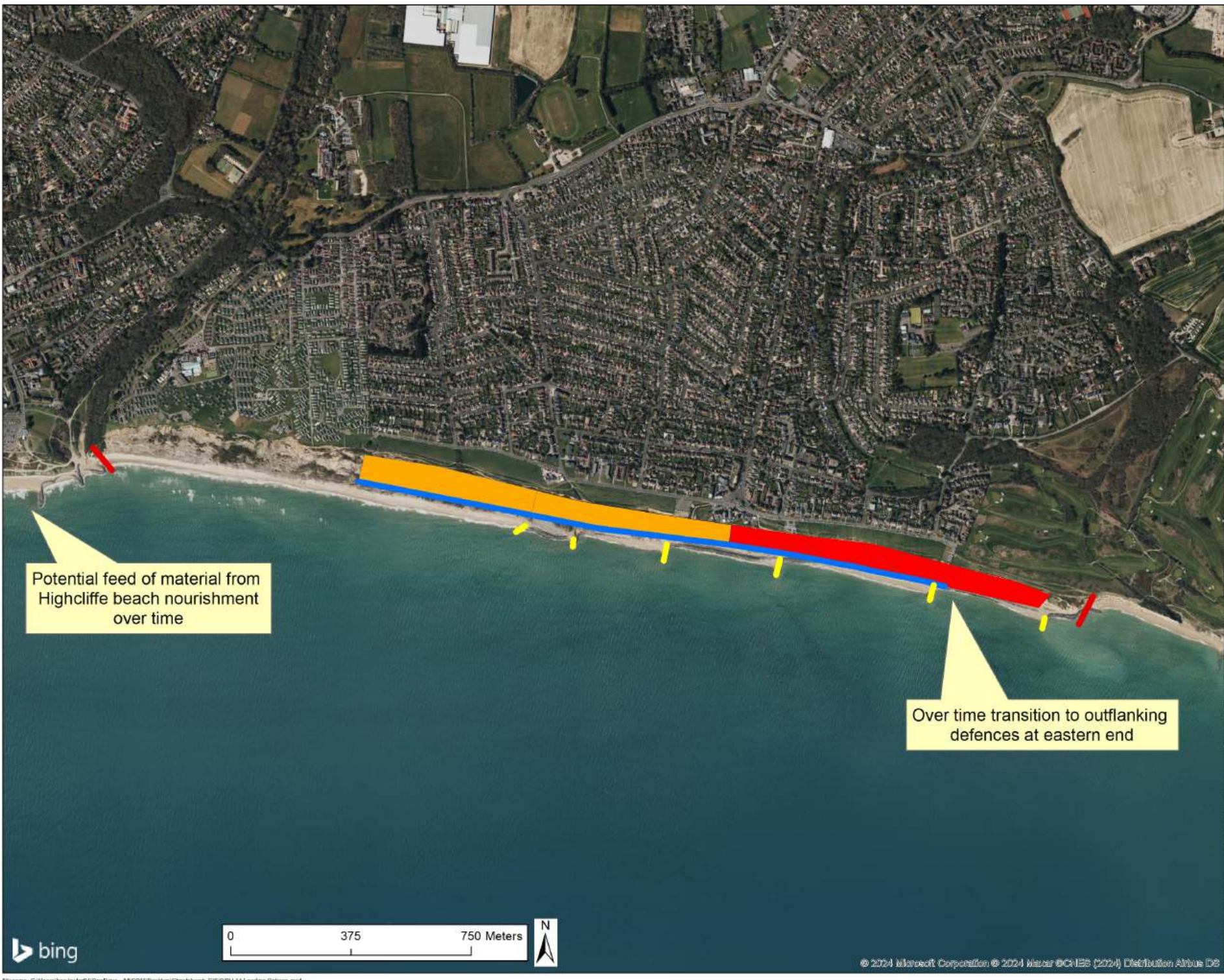
BT JS 23/04/24



This drawing has been prepared by the use of AECOM's computer-aided design and plotting systems and is subject to the accuracy of the data provided. AECOM does not warrant the accuracy of the data provided. AECOM is not responsible for any errors or omissions in this drawing. AECOM is not responsible for any errors or omissions in this drawing. AECOM is not responsible for any errors or omissions in this drawing.

Legend

- Refurbish existing Groyynes (Managed Realignment A; National Option)
- Rock Revetment refurbishment / upgrade (Managed Realignment A; National Option)
- New Cliff Drainage (Managed Realignment A; National Option)
- Maintain existing Cliff Drainage (Managed Realignment A; National Option)
- ODU Boundaries



Potential feed of material from Highcliffe beach nourishment over time

Over time transition to outflanking defences at eastern end

Copyright:
 Copyright: © 2024 Microsoft Corporation
 © Maxar © CNES (2024)
 Distribution Airbus DS

Issue/Revision:

Issue/Revision	Date	Description

AECOM Internal Project No:
 60558006

Drawing Title:

ODU 14


ODUS
 Scale at A3: 1:10,817.12

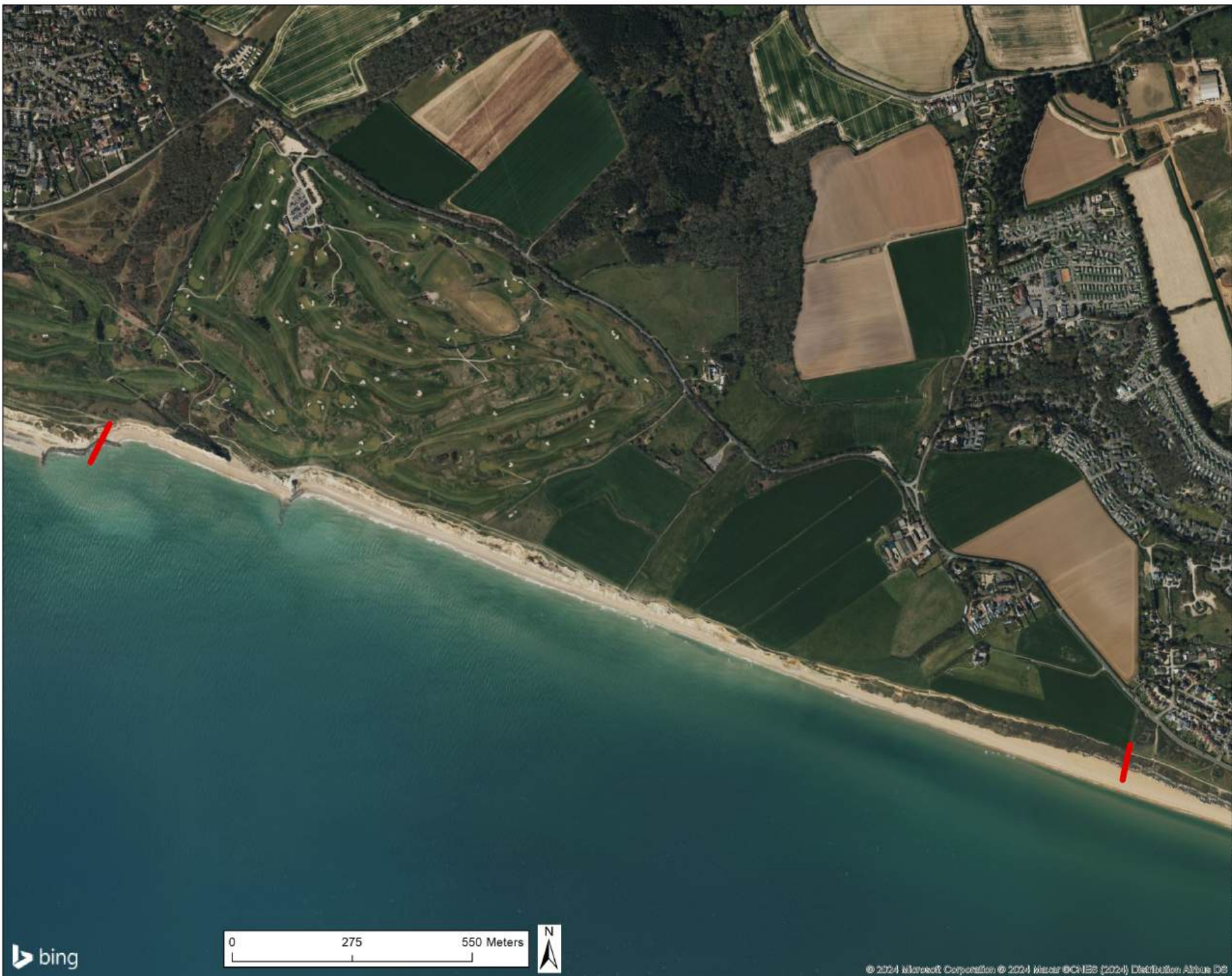
Drawing No:

Rev:
 V1

Drawn: Chk'd: Date:
 BT JS 23/04/24

Legend

 ODU Boundaries



Copyright:
 Copyright: © 2024 Microsoft
 Corporation
 © Maxar © CNES (2024)
 Distribution Airbus DS

Issue/Revision:

WT	Date	Description

AECOM Internal Project No:
 60558006

Drawing Title:

ODU 15

ODUS
 Scale at A3: 1:8,000

Drawing No:

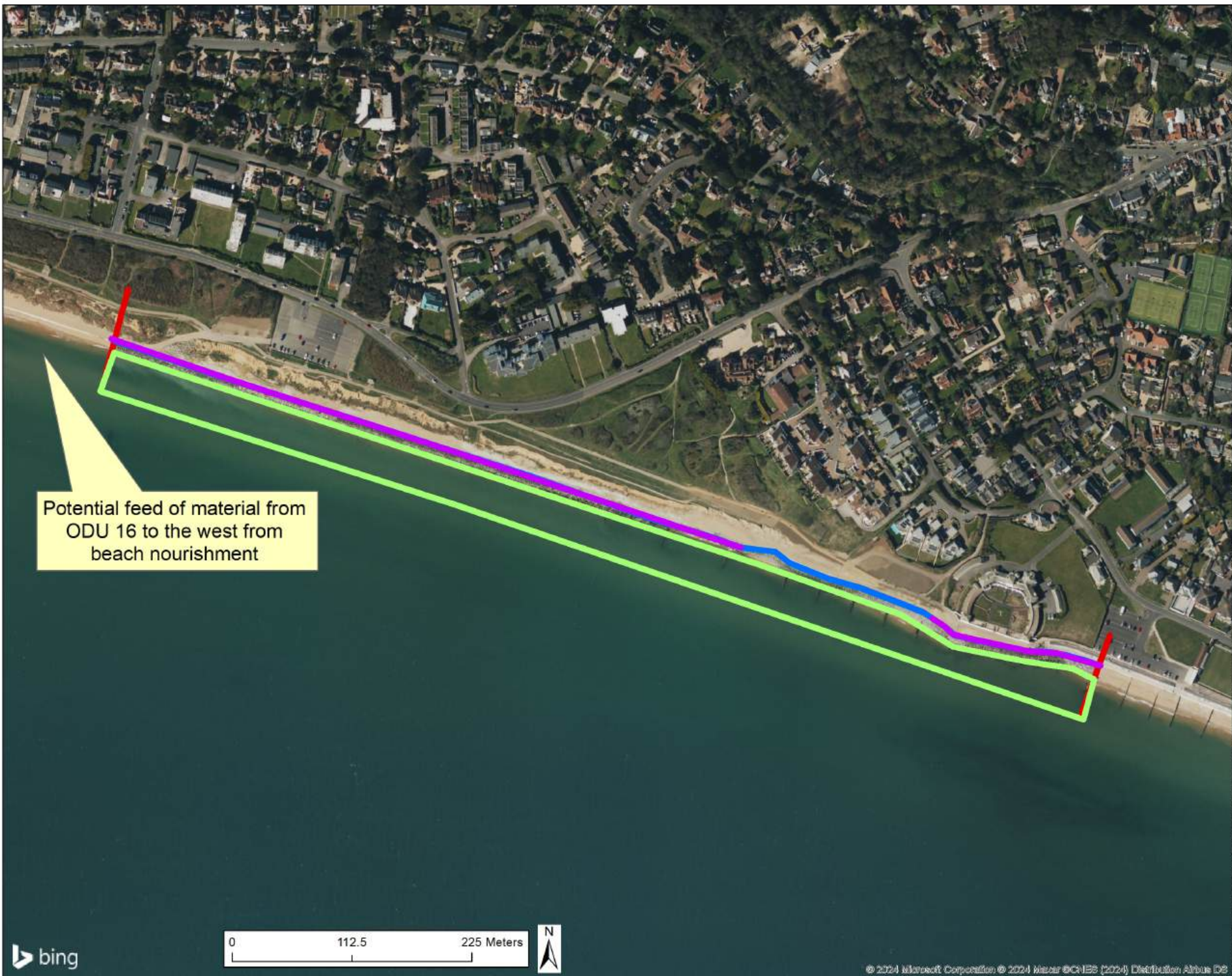
Drawn:	Chk'd:	Date:	Rev:
BT	JS	23/04/24	V1



This drawing is the property of AECOM I&E UK Limited. It is to be used for the project for which it was prepared. It is not to be used for any other purpose without the written consent of AECOM I&E UK Limited. AECOM I&E UK Limited is not responsible for any errors or omissions in this drawing. It is to be used for the project for which it was prepared. It is not to be used for any other purpose without the written consent of AECOM I&E UK Limited.

Legend

- Rock Revetment maintenance and improvements (Improve A-C; National and Local Options)
- Groyne maintenance and improvements (Improve A-C; National and Local options)
- Maintenance of Rock Revetment recently repaired (Improve A-C; National and Local Options)
- ODU Boundaries



Potential feed of material from ODU 16 to the west from beach nourishment

Copyright:
 Copyright: © 2024 Microsoft Corporation
 © Maxar © CNES (2024)
 Distribution Airbus DS

Issue/Revision:

Issue/Revision	Date	Description

AECOM Internal Project No:
 60558006

Drawing Title:

ODU 17

ODUS

Scale at A3: 1:3,278.44

Drawing No:

Rev:
 V1

Drawn: Chk'd: Date:

BT JS 23/04/24



Legend

- Setback defence (Improve A; National Option)
- Upgraded Seawall (Improve A; National Option)
- Beach Nourishment / new beach control structures (Improve A; National Option)
- ODU Boundaries



Copyright:
 Copyright: © 2024 Microsoft Corporation
 © Maxar © CNES (2024)
 Distribution Airbus DS

Issue/Revision:

WT	Date	Description

AECOM Internal Project No:
 60558006

Drawing Title:

ODU 18

ODUS

Scale at A3: 1:3,136.13

Drawing No:	Rev:	
	V1	
Drawn:	Chk'd:	Date:
BT	JS	23/04/24

